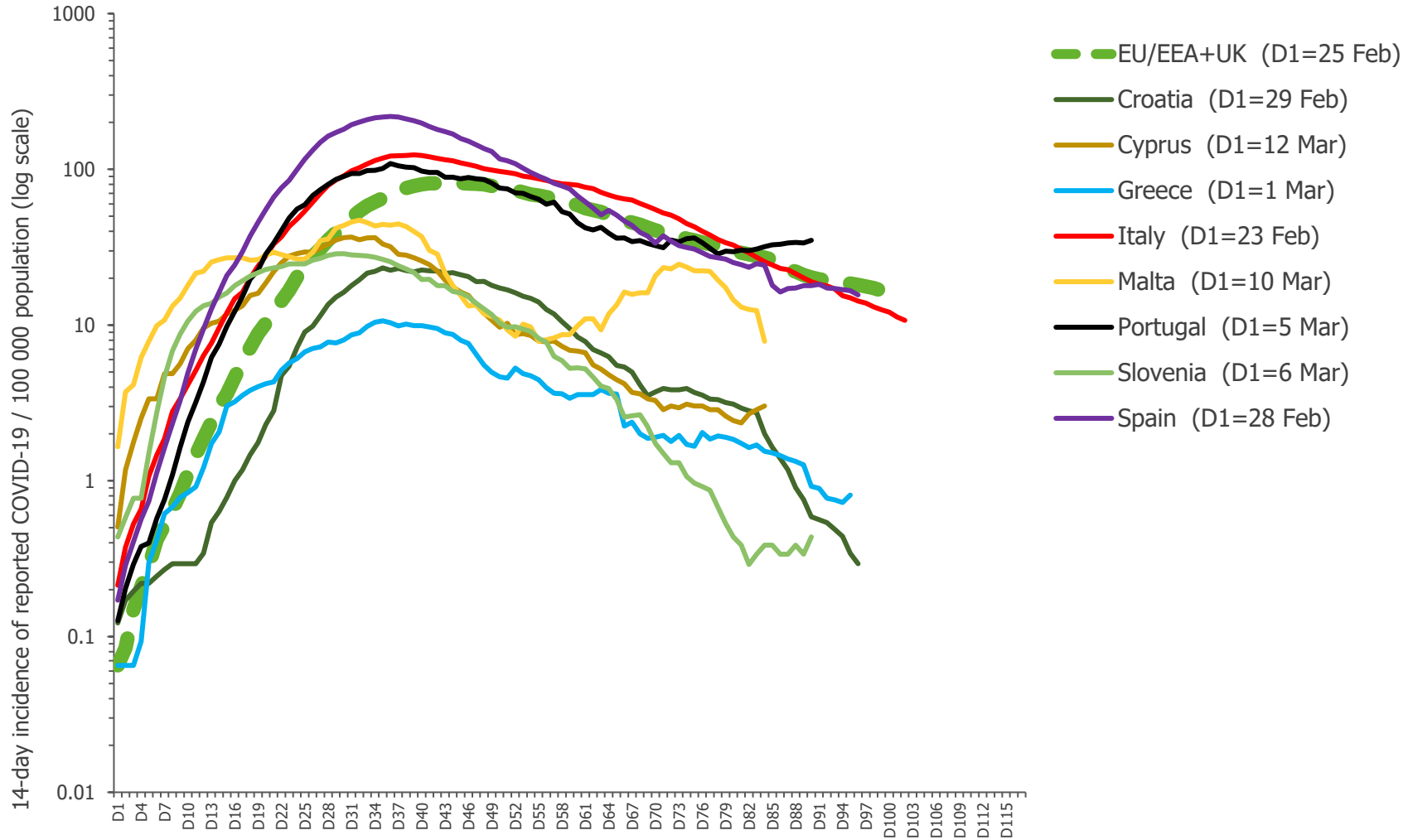


14-day truncated cumulative incidence of reported cases of COVID-19 per 100 000 population in Southern Europe



Days since cumulative incidence >0.05 reported COVID-19 cases / 100 000 population

Data as of 4 June 2020; if a country reported a cumulative incidence >0.05 cases/100 000 AND <5 cases in the previous 4 days, D1 is the most recent day with ≥5 cases in the past 14 days.

Assignment of countries to the United Nations geoscheme regions of Europe does not imply any assumption regarding political or other affiliation of countries or territories (<https://unstats.un.org/unsd/methodology/m49>).