

EBOLA DISEASE AND AIR TRAVEL

CONTACT TRACING: WHEN AND WHOM TO INCLUDE?

 Guidance for public health authorities

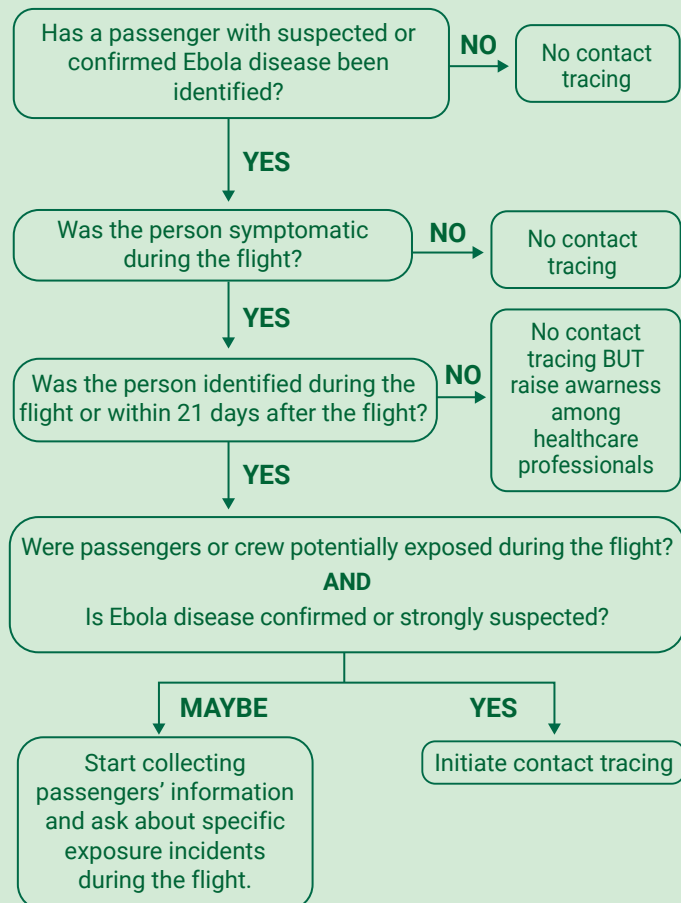


WHAT IS CONTACT TRACING?

Contact tracing helps identify people who may have been exposed to the virus so they can receive appropriate follow up and public health advice.

WHEN SHOULD CONTACT TRACING BE CONSIDERED?

Decision algorithm for public health authorities

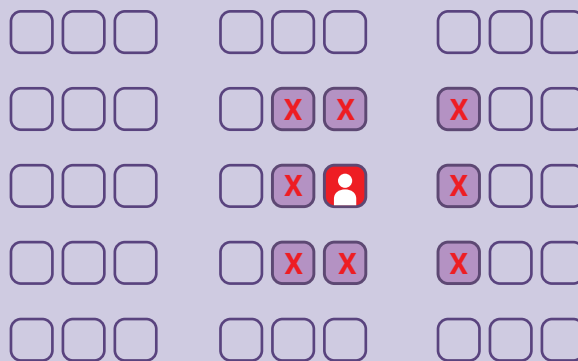


WHO SHOULD BE INCLUDED IN CONTACT TRACING?

People who may have been exposed during a flight

PASSENGERS

Include only those seated in direct proximity to the person with symptoms



CREW MEMBERS

Include crew members who provided service in the section where the person with symptoms was seated, and any crew members with direct contact with the person.



DIRECT CONTACT

Include any passengers who had direct contact with the person with symptoms or their bodily fluids.



CLEANING CREW

Include cleaning staff who cleaned the section, the seat, or the lavatories where the person with symptoms was.



NOT INCLUDED

- The entire aircraft.
- Passengers seated elsewhere, or using the same lavatory unless specific exposure incidents occurred.

Laboratory confirmation is preferred, but contact tracing may still be considered when the clinical and epidemiological information strongly suggests Ebola disease.