

## ECDC DAILY UPDATE

### Pandemic (H1N1) 2009

Update 16 November 2009,  
09:00 hours CEST

## Main developments in past 72 hours

- The number of deaths directly attributed by EU/EEA countries to pandemic influenza increased again in week 46;
- Total of 501 fatal cases in Europe and EFTA countries and 6 550 in the rest of the world have been reported up to date;
- WHO: Interim planning considerations for mass gatherings;
- WHO: Transmission dynamics and impact of pandemic influenza A (H1N1) 2009 Virus;
- WHO: Health conditions for travellers to Saudi Arabia for the pilgrimage to Mecca (Hajj).

This report is based on official information provided by the national public health websites or through other official communication channels. An update on the number of confirmed fatal cases is presented in Table 2 - as of 15 November 2009 -16:00 hours CEST, for the world, and 16 November 2009 - 09:00 hours CEST, for Europe.

## Epidemiologic update

All 27 EU and 4 EFTA countries are reporting cases of pandemic (H1N1) 2009 influenza. Since April 2009, a total 501 deaths have been reported (Table 2) and the number of deaths by week has been increasing over the last 4 weeks. In week

The latest available updates as of November 15, 2009, at 16:00, on new and on confirmed fatal pandemic A(H1N1) cases outside the EU/EFTA area by country, are also presented in Table 2.

The latest available updates on hospital admissions per Member State are presented in Table 1.

## Weekly Influenza Surveillance Overview for Week 45

In the ECDC Weekly Influenza Surveillance Overview for Week 45 the data for twenty countries across the EU/EEA countries indicated an increasing trend in pandemic influenza seen in primary care. Seven countries (Bulgaria, Iceland, Ireland, Norway and Sweden) reported very high levels of intensity while Poland and part of the UK (Northern Ireland) reported high levels of intensity and 14 countries reported medium intensity. Fourteen other countries are reporting high or very high pandemic intensity. Almost all influenza that are typed are of the pandemic virus A(H1N1). There remain very few influenza A(H3N2) viruses in circulation and no seasonal A(H1N1). In sentinel data between 40 and 50% of specimens show the influenza virus.

The full overview report is available at:

[http://www.ecdc.europa.eu/en/publications/Publications/091113\\_EISN\\_Weekly\\_Influenza\\_Surveillance\\_Overview.pdf](http://www.ecdc.europa.eu/en/publications/Publications/091113_EISN_Weekly_Influenza_Surveillance_Overview.pdf)

## Other Updates

### WHO interim planning considerations for mass gatherings published

The World Health Organization (WHO) published interim planning considerations for mass gatherings in the context of pandemic (H1N1) 2009 influenza. The purpose of the documents is to outline key planning considerations for planners of mass gatherings and it should be used in conjunction with WHO's "Communicable disease alert and response for mass gatherings) document.

The WHO guidance document can be found at:

[http://www.who.int/csr/resources/publications/swineflu/cp002\\_2009-0511\\_planning\\_considerations\\_for\\_mass\\_gatherings.pdf](http://www.who.int/csr/resources/publications/swineflu/cp002_2009-0511_planning_considerations_for_mass_gatherings.pdf)

### Health conditions for travellers to Saudi Arabia for the pilgrimage to Mecca (Hajj)

In the latest Weekly epidemiological report of the WHO, Health-related requirements and recommendations issued by the Ministry of Health of Saudi Arabia for entry visas for the Hajj and Umra seasons in 2009 were published. Among other issues these recommend that persons with underlying conditions increasing the risk of severe forms of pandemic influenza A(H1N1) disease and persons under the age of 12 and over the age of 65 to defer from performing the Hajj this year (2009). For seasonal influenza vaccine and pandemic (H1N1) 2009 vaccine, Saudi Arabian embassies will address health authorities in all countries about the availability of vaccines for this year's pilgrimage to Hajj. Where the vaccines are available in countries, proof of both vaccinations will be required by competent authorities before issuing visas. Where vaccines are not available, visas will be issued to pilgrims by the responsible health authority of each country.

### Transmission dynamics and impact of pandemic influenza A (H1N1) 2009 Virus

In the same issue, the WHO also summarizes some of the key observations from selected countries on hospitalization rates, mortality rates and risk groups that may inform preparations being made for the winter influenza season in countries of the northern hemisphere. In addition, members of the WHO informal mathematical modelling network for the 2009 influenza pandemic are working with their respective governments to estimate the reproductive rate (R0), attack rates, incubation period and generation time using data on pandemic influenza (H1N1) 2009 cases by date of onset, cases of influenzalike illness (ILI), rates of physician visits over time, and outbreak investigations in schools and other settings.

The full WHO report is available at: <http://www.who.int/entity/wer/2009/wer8446.pdf>

**Table 1: Reported number of confirmed Pandemic (H1N1) 2009 influenza cases admitted to hospitals and intensive care by country as of 16 November 2009, 09:00 hours (CEST) in the EU and EFTA countries**

Country (date of report)	Number of cases currently hospitalised	Cumulative number of cases admitted in hospitals	Number of cases currently in intensive care	Cumulative number of cases admitted to intensive care
Austria (11.11.)	-	-	-	-
Belgium (12.11.)	-	-	-	-
Bulgaria (08.11)	-	-	-	-
Cyprus(01.11)	-	-	-	4
Czech Republic (12.11.)	-	-	-	-
Denmark (11.11.)	-	-	-	-
Estonia (23.10.)	-	11	-	-
Finland (13.11.)	-	-	-	-
France (12.11.)	-	-	71	188
Germany (10.11.)	-	-	-	-
Greece (11.11.)	-	-	-	-
<b>Hungary (08.11.)</b>	-	<b>78</b>	-	-
Iceland (11.11.)	31	170	7	19
Ireland (12.11.)	191	785	22	65
<b>Italy (13.11)</b>	-	<b>329</b>	-	<b>167</b>
Latvia (12.11.)	-	1	-	-
Liechtenstein (11.11.)	-	-	-	-
Lithuania (04.11.)	-	-	-	-
Luxembourg (21.10.)	-	-	0	0
Malta (04.09.)	-	46	-	1
<b>Netherlands (13.11.)</b>	<b>291</b>	<b>909</b>	<b>19</b>	<b>91</b>
Norway (11.11.)	86	623	13	75
Poland (12.11.)	-	-	-	-
Portugal (11.11.)	121	-	17	-
Romania (11.11)	-	-	-	-
Slovakia (12.08.)	2	33	0	0
Slovenia (10.08.)	-	-	-	-
Spain (12.11.)	-	-	-	-
<b>Sweden (08.11.)</b>	<b>74</b>	<b>336</b>	-	-
Switzerland (11.11.)	15	48	-	11
United Kingdom <sup>a</sup> (12.11.)	785	-	173	-

Note: Data for the EU and EFTA countries correspond to the Ministry of Health or surveillance centre websites. New updates with changes in figures are shaded in yellow. (-) denotes no information readily available in official sources.

<sup>a</sup>Data includes all probable cases for England only. Does not include Scotland (841 cumulative hospitalisations), Wales (327) and Northern Ireland (527).

**Table 2. Reported number of new and cumulative confirmed fatal Pandemic (H1N1) 2009 influenza cases in EU and EFTA countries, as 16 November 2009, 09:00 hours CEST, and in the rest of the world by country, as of 15 November 2009, 16:00 hours CEST.**

Country	Number of new fatal cases since previous national update	Cumulative number of fatal cases
<b>EU AND EFTA COUNTRIES</b>		
Austria	-	1
Belgium	3	11
Bulgaria	-	5
Czech Republic	-	1
Finland	1	7
France	-	59 <sup>a</sup>
Germany	3	16
Greece	-	5
Hungary	-	5
Iceland	-	1
Ireland	-	15
Italy	6	44
Latvia	-	1
Luxembourg	-	1
Malta	-	3
Netherlands	5	22
Norway	2	18
Poland	1	1
Portugal	1	6
Slovakia	-	1
Spain	-	88
Sweden	-	5
United Kingdom	5	185
<b>Total</b>	<b>27</b>	<b>501</b>
<b>OTHER EUROPEAN COUNTRIES &amp; CENTRAL ASIA</b>		
Azerbaijan	-	2
Belarus	-	7
Croatia	1	4
Kosovo	1	1
Moldova	2	6
Russia	3	19
Serbia	1	9
Ukraine	-	14
<b>Total</b>	<b>8</b>	<b>62</b>

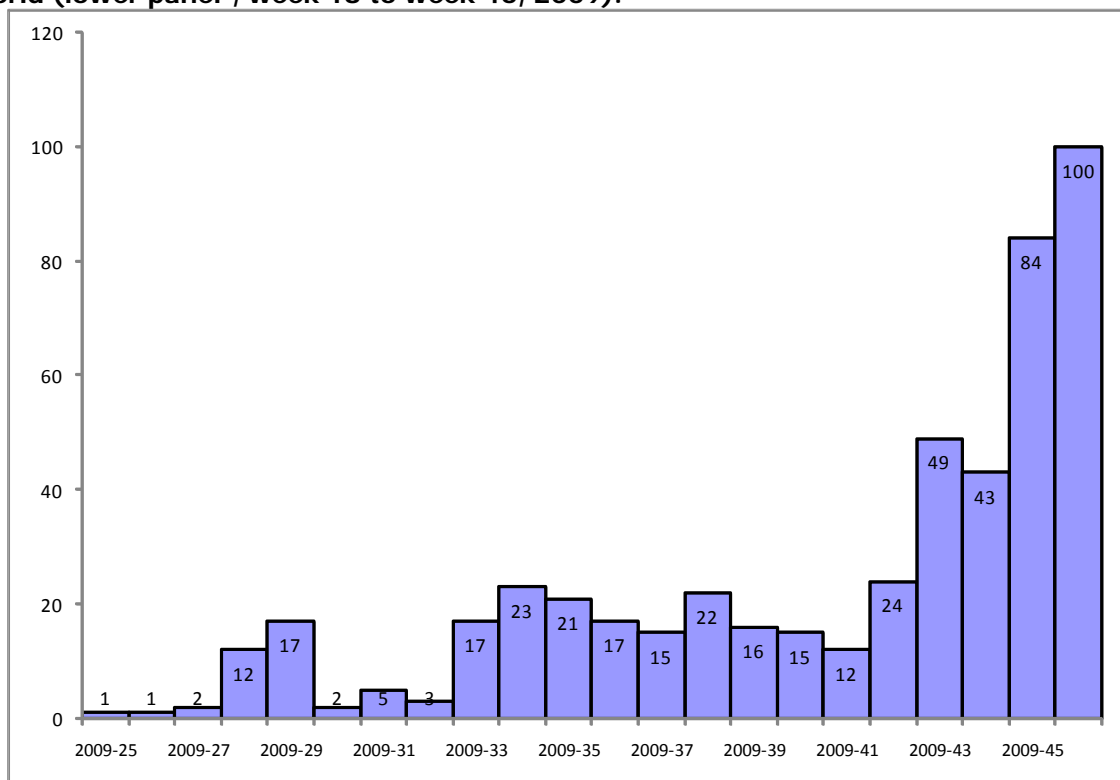
<b>MEDITERRANEAN AND MIDDLE-EAST</b>		
Bahrain	-	6
Egypt	1	7
Iran	-	58
Iraq	-	7
Israel	2	41
Jordan	3	10
Kuwait	-	26
Lebanon	-	3
Occupied Palestinian Territory	-	2
Oman	2	27
Qatar	-	5
Saudi Arabia	-	66
Syria	6	13
Turkey	20	60
United Arab Emirates	-	6
Yemen	-	17
<b>Total</b>	<b>34</b>	<b>354</b>
<b>AFRICA</b>		
Ghana	-	1
Madagascar	-	1
Mauritius	-	8
Mozambique	-	2
Namibia	-	1
Sao Tome & Principe	-	2
South Africa	-	91
Sudan	-	1
Tanzania	-	1
<b>Total</b>	<b>-</b>	<b>108</b>
<b>NORTH AMERICA</b>		
Canada	26	161
Mexico	30	482
USA	119	1123
<b>Total</b>	<b>175</b>	<b>1766</b>
<b>CENTRAL AMERICA &amp; CARIBBEAN</b>		
Bahamas	-	4
Barbados	-	3
Cayman Islands	-	1
Costa Rica	-	38
Cuba	-	7

Dominican Republic	-	22
<b>El Salvador</b>	<b>2</b>	<b>25</b>
Guatemala	-	18
Honduras	-	16
Jamaica	-	5
Nicaragua	-	11
Panama	-	11
Saint Kitts and Nevis	-	1
Saint Lucia	-	1
Suriname	-	2
Trinidad-Tobago	-	5
<b>Total</b>	<b>2</b>	<b>170</b>
<b>SOUTH AMERICA</b>		
Argentina	-	600
<b>Bolivia</b>	<b>1</b>	<b>57</b>
Brazil	-	1368
Chile	-	140
Colombia	-	141
Ecuador	-	82
Paraguay	-	52
Peru	-	183
Uruguay	-	33
Venezuela	-	103
<b>Total</b>	<b>1</b>	<b>2759</b>
<b>NORTH-EAST &amp; SOUTH ASIA</b>		
Afghanistan	-	11
Bangladesh	-	6
<b>China (Mainland)</b>	<b>7</b>	<b>43</b>
<b>Hong Kong SAR China</b>	<b>1</b>	<b>40</b>
<b>India</b>	<b>6</b>	<b>514</b>
Japan	-	28
Macao SAR China	-	2
<b>Mongolia</b>	<b>7</b>	<b>15</b>
<b>South Korea</b>	<b>12</b>	<b>64</b>
Sri Lanka	-	1
Taiwan	-	27
<b>Total</b>	<b>33</b>	<b>751</b>
<b>SOUTH-EAST ASIA</b>		
Brunei Darussalam	-	1
Cambodia	-	4

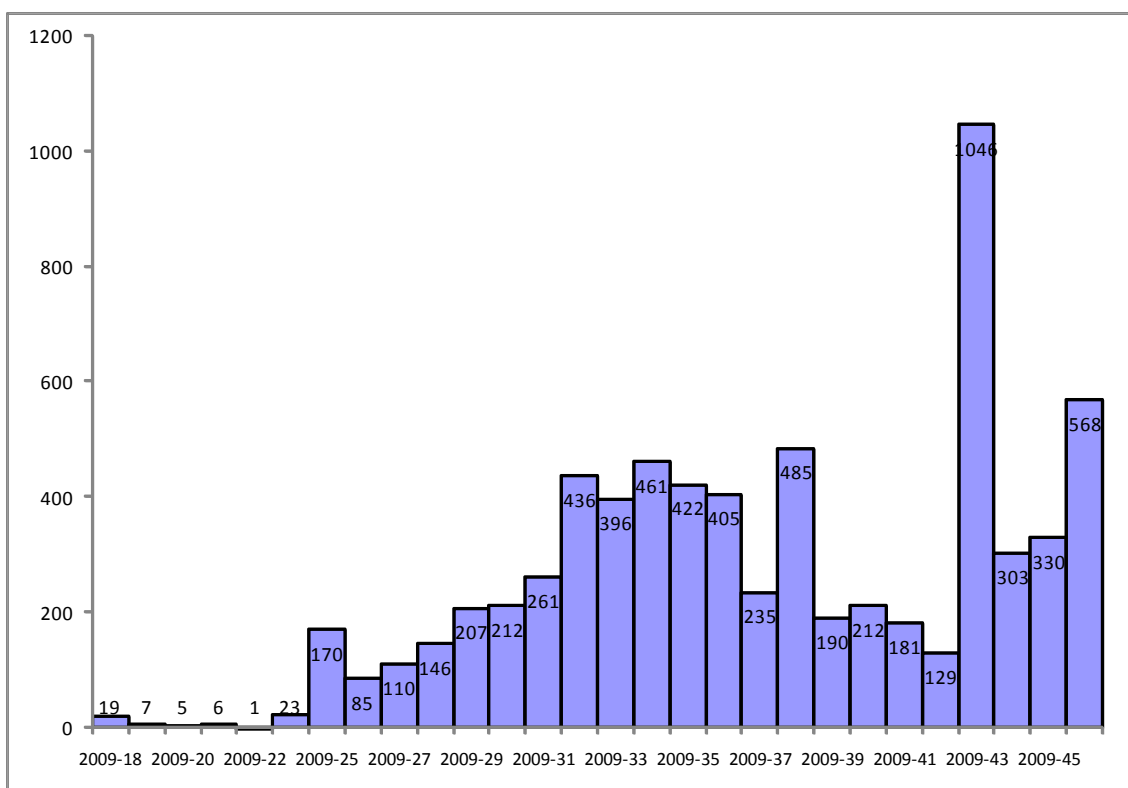
Indonesia	-	10
Laos Peoples Democratic Republic	-	1
Malaysia	-	77
Philippines	-	30
Singapore	-	18
Thailand	-	184
Vietnam	-	41
<b>Total</b>	<b>-</b>	<b>366</b>
<b>AUSTRALIA &amp; PACIFIC</b>		
Australia	2	189
Cook Islands	-	1
Marshall Islands	-	1
New Zealand	-	19
Samoa	-	2
Solomon Islands	-	1
Tonga	-	1
<b>Total</b>	<b>2</b>	<b>214</b>
<b>TOTAL</b>	<b>282</b>	<b>7051</b>

<sup>a</sup> Deaths reported from France include 1 in Guyana, 9 in New Caledonia, 7 in the French Polynesia, 6 in the Reunion, 1 in Martinique, 2 in Mayotte, 1 in Guadeloupe and 32 in mainland France.

**Figure 1: Number of confirmed deaths among pandemic (H1N1) 2009 influenza cases by week of notification. EU and EFTA countries (upper panel, week 25 to week 46, 2009) and world (lower panel<sup>a</sup>, week 18 to week 46, 2009).**



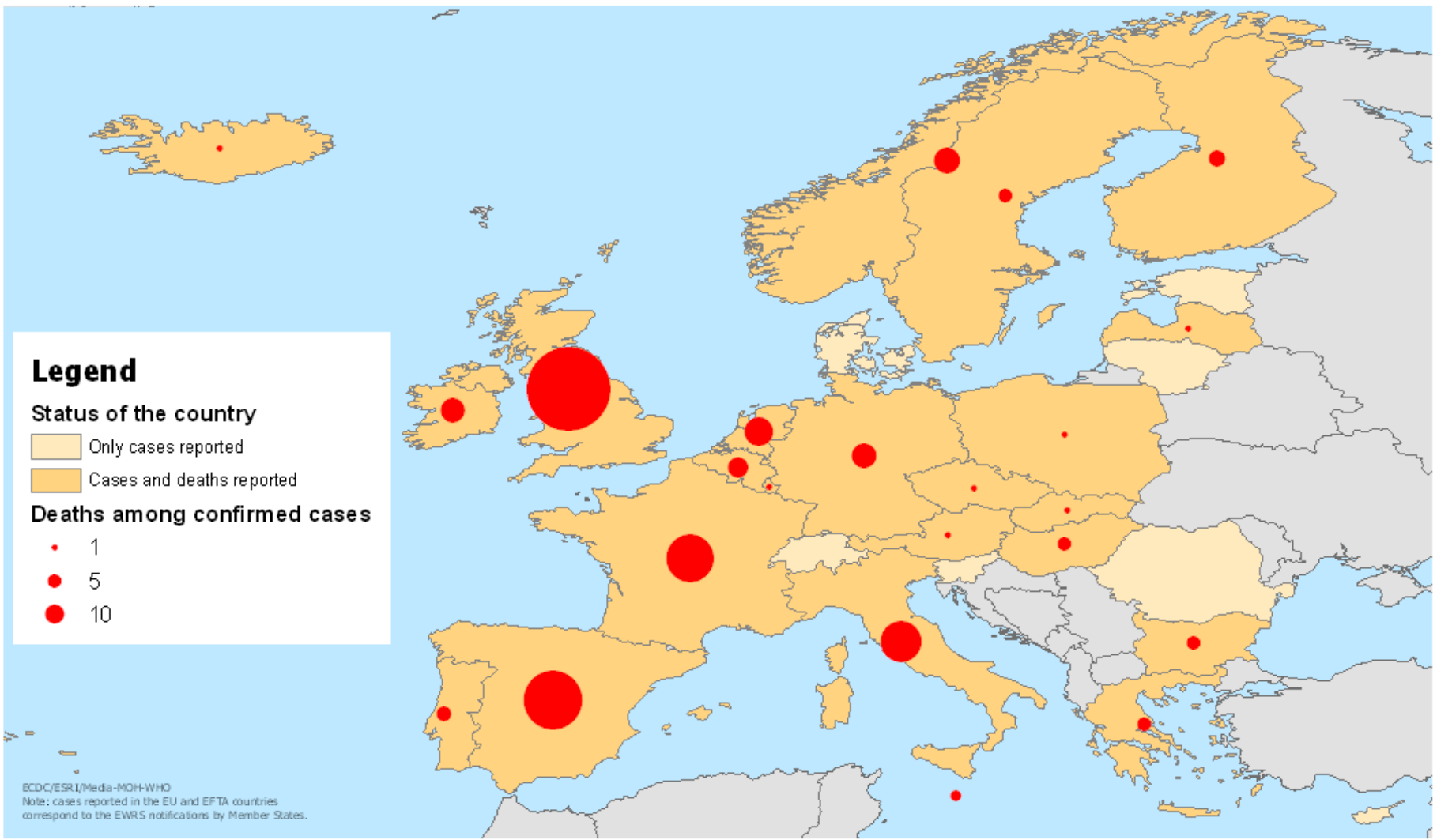
Notification Week



Notification week

<sup>a</sup> The apparent increase in the number of deaths in week 43 is due to the aggregate reporting of fatal cases from Brazil from weeks 37 to 40 and to our batch report of US fatal cases since August 1<sup>st</sup>.

# Reported cumulative number of confirmed fatal cases of influenza A(H1N1)v in EU and EFTA countries, as of 16 November 2009, 09:00 hours CEST



ECDC/ESRI/Media-MOH-WHO  
Note: cases reported in the EU and EFTA countries correspond to the EWRS notifications by Member States.

## Reported cumulative number of confirmed fatal cases of influenza A(H1N1)v and country reporting status by country, as of 15 November 2009, 16:00 hours CEST

